



Optimize your energy consumption – discover HeiEnergy

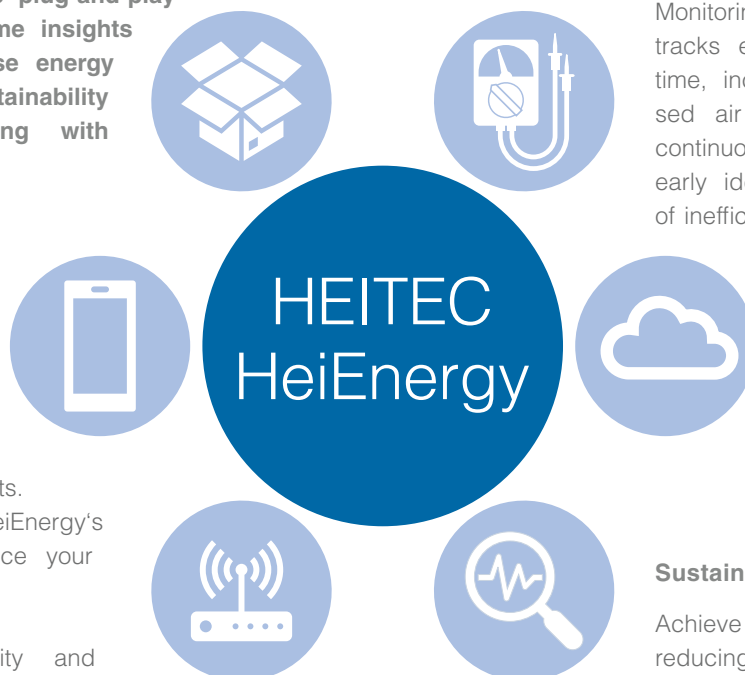
The HeiEnergy App is your comprehensive standalone application for monitoring, visualizing and optimizing industrial energy consumption data. Our innovative plug-and-play solution provides real-time insights to reduce costs, increase energy efficiency and meet sustainability goals without interfering with existing systems.

What HeiEnergy offers

The intuitive plug-and-play solution provides comprehensive tracking of energy and media consumption from your equipment to entire plants.

You can use HeiEnergy's data to significantly reduce your energy and media costs.

With innovative scalability and retrofittability, our solution can be adapted to any size of business.



Features

Monitoring

Monitoring in the HeiEnergy app tracks energy consumption in real time, including electricity, compressed air and CO₂ emissions. This continuous monitoring allows for early identification and optimization of inefficient patterns.

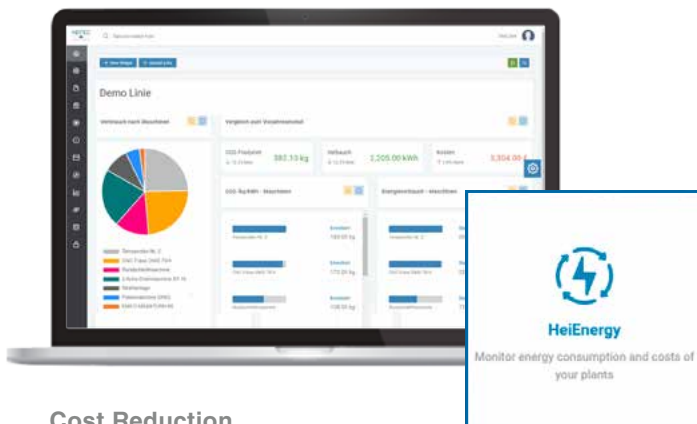
CO₂ Footprint

Thanks to HeiEnergy's high scalability, you can determine the CO₂ footprint of the entire company down to the individual product.

Sustainability

Achieve your sustainability goals by reducing CO₂ emissions per product and promoting greener production methods.

HeiEnergy – your benefits



Cost Reduction

Real-time monitoring and optimization of energy consumption can reduce energy costs. The improved overview of energy costs provides a clearer and more detailed breakdown of energy expenditure. This enables better cost management, identification of potential savings and implementation of cost reduction measures.

Visualization

The collected data is visualized in clear graphs in the HeiEnergy App, making it easier to compare.

Scalability

The scalability of the Hei Energy App allows companies to flexibly adapt the application to their individual needs and seamlessly expand it to different levels. From monitoring individual systems to integrating with entire production facilities, it provides the agility to keep pace with growth and changing needs.

Benchmark

The HeiEnergy App makes it easy to compare energy consumption and efficiency between different systems or plants. This provides insight into performance differences and identifies potential for optimization and cost savings.

Innovative Integration

The innovative integration process avoids time-consuming installation processes. Sensors are integrated directly into the application by scanning the QR code. There is no need for complex programming. The HeiEnergy App fits perfectly into the HEITEC Solution Center and thus into HEITEC's open ecosystem.

HeiEnergy add-ons

You can also learn more about:

Carbon Footprint

The Carbon Footprint add-on provides the ability to evaluate the energy data collected per unit produced.

Energie Audit

The Energie Audit add-on prepares the data for the energy audit according to DIN EN 16247 and makes it available for the audit.

If you have any questions, please contact us at info-smartfactory@heitec.de

